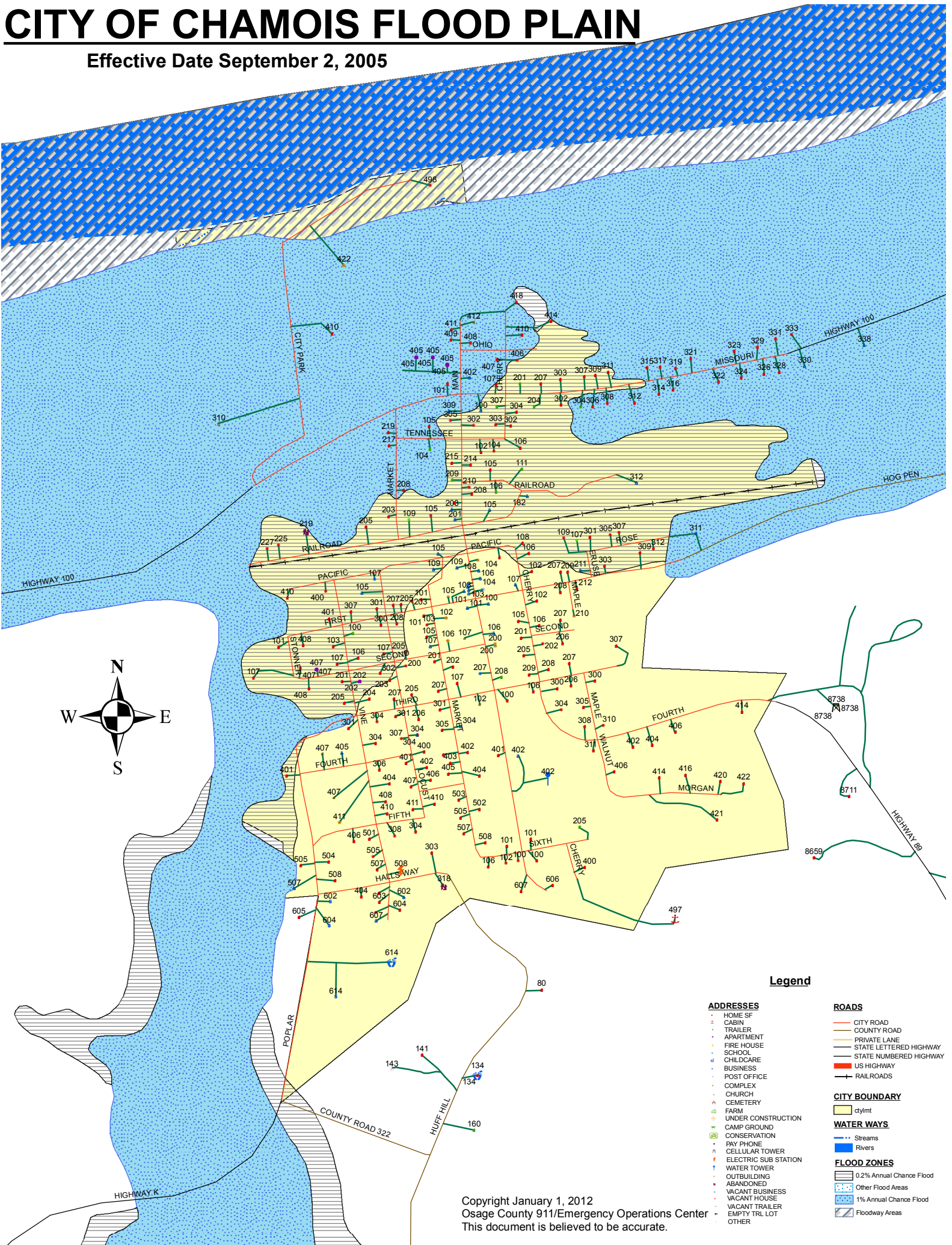


# CITY OF CHAMOIS FLOOD PLAN

Effective Date September 2, 2005



### Legend

- |  |   |   |
|--|---|---|
| <p><b>ADDRESSES</b></p> <ul style="list-style-type: none"> <li>• HOME SF</li> <li>± CABIN</li> <li>• TRAILER</li> <li>• APARTMENT</li> <li>• FIRE HOUSE</li> <li>• SCHOOL</li> <li>• CHILDCARE</li> <li>• BUSINESS</li> <li>• POST OFFICE</li> <li>• COMPLEX</li> <li>• CHURCH</li> <li>• CEMETERY</li> <li>• FARM</li> <li>• UNDER CONSTRUCTION</li> <li>• CAMP GROUND</li> <li>• CONSERVATION</li> <li>• PAY PHONE</li> <li>• CELLULAR TOWER</li> <li>• ELECTRIC SUB STATION</li> <li>• WATER TOWER</li> <li>• OUTBUILDING</li> <li>• ABANDONED</li> <li>• VACANT BUSINESS</li> <li>• VACANT HOUSE</li> <li>• VACANT TRAILER</li> <li>• EMPTY TRIL LOT</li> <li>• OTHER</li> </ul> | <p><b>ROADS</b></p> <ul style="list-style-type: none"> <li>— CITY ROAD</li> <li>— COUNTY ROAD</li> <li>— PRIVATE LANE</li> <li>— STATE LETTERED HIGHWAY</li> <li>— STATE NUMBERED HIGHWAY</li> <li>— US HIGHWAY</li> <li>— RAILROADS</li> </ul> | <p><b>CITY BOUNDARY</b></p> <ul style="list-style-type: none"> <li>ct/mft</li> </ul> <p><b>WATER WAYS</b></p> <ul style="list-style-type: none"> <li>••• Streams</li> <li>— Rivers</li> </ul> <p><b>FLOOD ZONES</b></p> <ul style="list-style-type: none"> <li>0.2% Annual Chance Flood</li> <li>Other Flood Areas</li> <li>1% Annual Chance Flood</li> <li>Floodway Areas</li> </ul> |
|--|---|---|

Copyright January 1, 2012  
 Osage County 911/Emergency Operations Center  
 This document is believed to be accurate.