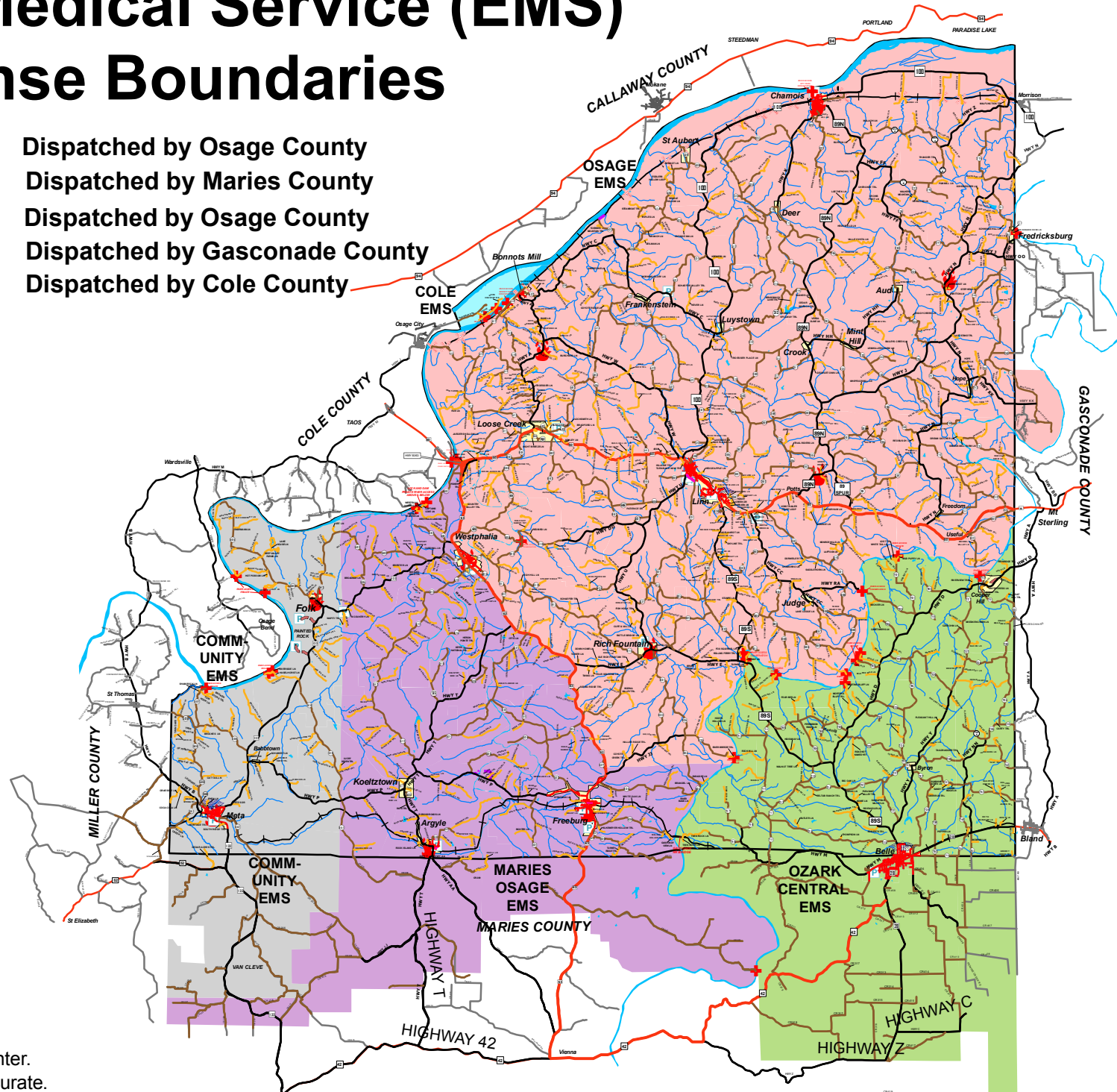


Emergency Medical Service (EMS) Response Boundaries

- COMM-UNITY AMBULANCE
- MARIES OSAGE EMS
- OSAGE AMBULANCE
- OZARK CENTRAL EMS
- COLE COUNTY EMS

Dispatched by Osage County
 Dispatched by Maries County
 Dispatched by Osage County
 Dispatched by Gasconade County
 Dispatched by Cole County



- Park
- River Access
- Railroad Crossing
- Ambulance Base
- Fire House